

outlook

THE NEWSLETTER FOR SUPPORTERS OF THE INSTITUTE FOR CANCER VACCINES & IMMUNOTHERAPY (ICVI)

FROM THE CHAIRMAN



Sir Harry Cotterell Bt OBE
Chair of Trustees

WELCOME TO OUR AUTUMN 2023 ISSUE OF OUTLOOK

Welcome to the Autumn issue of Outlook. In this issue we introduce the person in charge of one of our new research projects, Dr Jun Ishihara from Imperial College. Jun has just begun work on a fascinating project which is working towards safer and more effective immunotherapy for patients with ovarian cancer and we are really excited to see how it progresses.

Our quest continues to discover why some patients respond better to immunotherapy than others and to seek cheaper and more effective alternatives to expensive bespoke drugs. To this end we are happy to report a return to our ICVI team of Dr Wai Liu who was successful in receiving ICVI support to begin important pre-trial research on Low Dose Naltrexone. Due to lack of funds we have had to restrict Wai's project to one year only in the first instance. We are working very hard to raise more money this year so that Wai and others can continue their research which we hope will provide compelling evidence for future trial work and encourage investors to support large scale trials.

We remain so grateful to you all for helping us achieve all of this – we couldn't do it without your generous donations which come in throughout the year. Joining our wine club and of course buying Christmas cards are two ways you can support us and we have listed some others in our fundraising section inside. Please do get in touch with our fundraising office if you can help us in any way.

Registered Charity No. 1080343
Company Limited by Guarantee
Registered in England No. 03884777

icvi.org.uk info@icvi.org.uk

 **Institute for
Cancer Vaccines
& Immunotherapy**
Changing Lives Through Research

Lucy does it again!

We were delighted to hear from our wonderful Lucy De Ville who has done many running events for us in the past few years. Lucy was granted a "Good for Age" place in April's London Marathon. She completed the course in the amazing time of 5 hours 25 minutes, customised her running kit with an ICVI logo-ed snack pocket and raised a fantastic £1,700 for the ICVI.



Wine Club is back!

Actually it never went away but we are promoting our fabulous wine club once again. Started by loyal long term supporter George Bouwens in 2021, our wine club has raised nearly £3,000 to date. ICVI supporters can choose to have either one off or quarterly deliveries of a mixed 12 bottle case of wine with a donation going to the ICVI for each order. Please look at the flyer enclosed with this issue or look at the shop section of our website: www.icvi.org.uk/shop . If you have any questions please email abi@icvi.org.uk



Christmas Cards

Our cards are another way to support the charity, designs are below and details are on the attached flyer. Please do order as soon as you can as we tend to sell out of popular designs very quickly. They are available via the attached flier or you can order online at www.icvi.org.uk/shop

Text **CANCER10** to **70191** to donate **£10** Text **CANCER20** to **70191** to donate **£20** Text **HIGH5** to **70970** to donate **£5**

Can you help the ICVI?

There is such huge competition out there for charities, especially in these difficult economic times, and we are always incredibly grateful for your donations. There are so many other ways to help us too.

Tribute Funds

Tribute funds are such a lovely way for relatives to remember and honour a loved one as well as raising funds for the ICVI and encouraging the rest of your community to help too.

Our Tribute Funds are an important source of income for us, and those involved tell us how much they value them. They are very easy to set up. We can add your personal messages to the page along with your donation.

Abi updates the tribute funds regularly so you can see how much you have raised. They are an excellent way of spreading the word about the ICVI within your community and encouraging others to support us. If you would like to start a tribute fund for a loved one please email abi@icvi.org.uk

Charity of the year schemes

Does your employer or any company you know run a charity of the year scheme? Could you recommend us?

Charitable Trusts

Much of our funding comes via these special trusts set up specifically to fund other charities. Our experience is that personal contact can play a significant role in our success when applying to charitable trusts. If you have any such contacts we would love to hear from you.

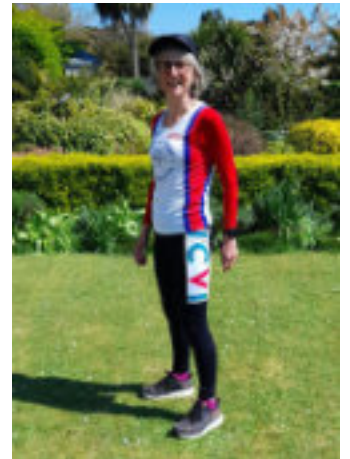
Events and sponsored activities

There are numerous events that you could organise or sponsored activities that you could participate in to raise funds for the ICVI. If you would like a list of ideas or any support please contact marie@icvi.org.uk

Media contacts

At present, we are not well known enough to receive the kind of public support that larger charities do, so we'd love to raise our profile - using newspapers, magazines, websites, TV and radio programmes to provide information about our research and its impact on patients. If you have any media contacts either national or local we'd love to hear from you. We can provide interviewees in the form of Professor Dalglish or one of our researchers and also have some wonderful people who have offered to be interviewed as case studies.

If you think you could help with any of the above please contact marie@icvi.org.uk



Exciting Discovery

The ultimate aim of every member of our research team is to empower the immune system to recognise and eliminate cancer cells. To this end the vast majority of our laboratory work is looking at certain cells in the body's immune system and their interactions with tumour cells. Gamma Delta T cells are of particular interest because they have the ability to kill tumour cells. We have shown that mycobacteria can stimulate Gamma Delta T cells and have identified a range of immune checkpoints on these cells. Immune checkpoints are mechanisms which prevent the immune system from attacking normal, healthy cells while still effectively targeting foreign or abnormal cells, such as infected or cancerous cells.

Understanding immune checkpoints is crucial in cancer immunotherapy research because these checkpoints play a pivotal role in regulating the immune system's response to cancer cells. Cancer cells often exploit these checkpoints to evade immune detection and destruction. By targeting and modulating these checkpoints, we can further our understanding of how to harness the immune system's potential to target cancer tumours.

One of our researchers, Laura Ridgley, worked on understanding the control mechanisms which exist on Gamma Delta T cells with the aim of increasing the efficiency of cancer treatments. Laura identified a range of novel immune checkpoints on Gamma Delta T cells. These markers are unique to the innate immune system and are completely different to the ones currently being targeted by other researchers at present.

Laura's discovery is of particular interest as it cements the relationship between the Gamma Delta population and the innate immune response. This discovery has far-reaching positive implications in being able to directly target cancer cells.

We are delighted that this important piece of work has recently been published in a prestigious immunotherapy journal. Sadly we do not currently have the funds to continue our investigations but hope that its publication will serve to inspire other researchers to build upon this breakthrough discovery.



Welcome to Jun Ishihara

In July we went to meet the newest member of our research team at Imperial College London. Dr Jun Ishihara's ICVI funded project is called "Engineering immune checkpoint inhibitors to develop safer and more effective immunotherapy for patients with ovarian cancer". It aims to develop clinically relevant forms of tumour targeted Checkpoint Inhibitors (CPIs) that are effective for cancer with minimal side-effects. Ovarian cancer is usually unresponsive to CPI therapies. It is expected that the new therapy will induce immune cell activation only within the tumour but not within healthy tissues. This novel tumour-specific delivery method holds high potential to improve treatments of various cancers in the clinic, hopefully within a few years of the end of the project.

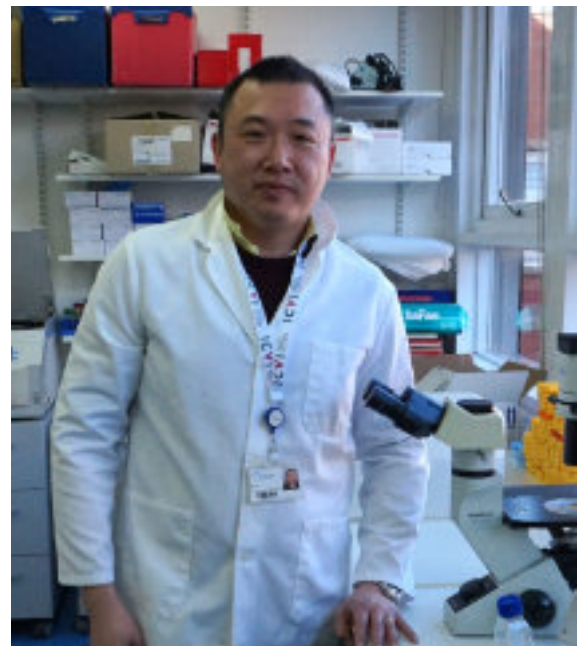


Welcome back to Wai Liu

We were delighted to welcome Dr Wai Liu back to the ICVI fold in August. Following successful peer review Wai was able to receive funding for his project "A study to determine the mechanism(s) of action underpinning the molecular interaction between immunomodulatory agents. These will focus on calcitriol, low dose Naltrexone and cannabinoids, and studies will provide supporting data that adds to the evidence of these drugs used in patients with cancer".

Wai has certainly hit the ground running on his return to his lab at St George's and has already come up with some really interesting data which he hopes will be publishable in the near future.

We hope to be able to update you in the next issue of Outlook.



Text **CANCER10** to **70191** to donate **£10** Text **CANCER20** to **70191** to donate **£20** Text **HIGH5** to **70970** to donate **£5**

Update from Professor Dalglish

The Benefits of Long Term Follow Up

Recently in my melanoma clinic I have been noticing many patients who have been completely disease-free for many years. What has impressed me is that many of these patients had very bad prognostic features at presentation, such as a deep melanoma with multiple lymph nodes and even deposits in the skin occurring repeatedly, requiring excision. Very early on we were offering CancerVax, the vaccine from Donald Morton in the USA, until the trial was stopped. It was interesting to note that on the trial, patients who received BCG alone did far better than expected.



So, from this time patients were offered BCG if there was no other trial ongoing. We took part in formal studies involving Interferon and Avastin and many targeted vaccines, none of which made any significant difference. We then noted that many patients had low Vitamin D and on supplementation they seemed to do much better, so a default option of Vitamin D and BCG vaccine became the norm, with other agents, such as anti-inflammatories, e.g., Aspirin or Bromelain, and anti-angiogenic agents, such as green tea extract, advised.

We then performed studies using a development of BCG called Mycobacterium vaccae, which was superseded by Mycobacterium obuense, developed by Immodulon, now known as IMM-101. It seems that by recommending that all patients take the basic supplements and giving them BCG, M.vaccae or IMM-101 that amazing disease control has been obtained and there are many patients who had recurrences for two or three years, which finally stopped when they were offered BCG, M.vaccae or

IMM-101.

My early work on viruses causing cancer led to my deep involvement with HIV, which often presented with lymphoma or Kaposi's Sarcoma. I realised that chronic viral infections were associated with many cancers and that the link here was chronic inflammation. It therefore made sense to add in anti-inflammatories to damp down the fuel, as it were, for these cancers developing.

Text **CANCER10** to **70191** to donate **£10** Text **CANCER20** to **70191** to donate **£20** Text **HIGH5** to **70970** to donate **£5**

The large studies on Aspirin, looking primarily at cardiac events, began to show unexpected benefit with all cancer incidents, particularly colorectal cancer but also other major cancers greatly reduced in patients taking Aspirin, such as lung cancer, oesophageal cancer, pancreatic cancer and prostate cancer.

This was the basis for being alert to the potential benefits of low dose Naltrexone, which we were the first to show inhibited the major inflammatory pathway which produces a cancer growth factor known as IL-6. It is interesting to note that none of the other anti-inflammatories available have significant impact on this particular pathway.

It has been very reassuring to note that such simple observation and translating this observation has made such a massive impact on patient outcome. Our realisation that correcting low Vitamin D levels, which are endemic, especially in Tooting and bizarrely in many melanoma patients from all over, made such a significant difference to the ability to respond to our vaccines and immunotherapy programme. I was therefore delighted to see that this has been eventually looked at in great detail by our American colleagues, who have confirmed in very large metastatic analysis of randomised trials that adding in Vitamin D at the time of a cancer diagnosis has nearly twice the benefit that targeting an ER+ breast cancer with Tamoxifen has. The analysis of more sophisticated vaccine studies showed that patients with high inflammatory markers were much less likely to do well than those with normal markers, even if they were corrected with Vitamin D, and this, I believe, is the justification for adding in other anti-inflammatories, whether it be Aspirin or our particular focus now, low dose Naltrexone.

A particular highlight was a clinic where I saw three people, all of whom had stage IV disease ten years ago, all of whom had been told that they were unlikely to survive more than eighteen months! Never believe what your doctor tells you!

DONATING - PLEASE HELP US FIGHT CANCER TODAY



To donate by card please visit www.icvi.org.uk or phone **020 7498 8263**

PERSONAL DETAILS

TITLE: Mr Ms Mrs Other

NAME:

ADDRESS:

POST CODE:

TELEPHONE/
MOBILE:

EMAIL:

WHERE DID YOU HEAR ABOUT US?

We would like to keep you in touch with our work. If you prefer not to receive our newsletter twice a year please tick here:

DONATION

One hour of research undertaken by the whole of the research team costs £400 and £2,000 per patient per year for a trial (this is an average cost, including salaries, consumables and supervision)

£400 £200 £100 £50 £

OTHER

ONE OFF PAYMENT

I enclose a cheque / CAF Voucher made payable to the ICVI

Please tick this box if you wish to receive an acknowledgement of your donation

IN MEMORY OF (optional):

Please treat all donations I make or have made to the ICVI as Gift Aid donations until further notice

SIGNATURE(S)

DATE

You must pay an amount of income tax and/or capital gains tax equal to the tax we reclaim on your donations. Please notify us if your address or tax circumstances change and this in no longer the case.

REGULAR PAYMENT

Please email abi@icvi.org.uk or fill in the form below

PLEASE PAY THE ICVI the amount ticked above yearly (1 payment annually), each quarter(4 payments), monthly (12 payments)* until further notice and debit my account:

*please delete as applicable

ACCOUNT NO:

SORT CODE:

STARTING: please allow one month from today

SIGNATURE(S)

DATE

TO THE MANAGER (Bank name and address)

POST CODE

PLEASE COMPLETE AND SEND THIS FORM TO:
ICVI, Unit 15 Abbeville Mews
88 Clapham Park Road
LONDON, SW4 7BX

FOR ICVI USE ONLY
Recipient Bank details: Pay Barclays Bank plc.
Account Name: The ICVI Sort code: 20-47-34
Account Number: 10088145
Payment Reference: